

Non-Potable Water System Winterization Schedule

The Third Thursday in October the Non-potable water system is turned off.

The Third Saturday in October is the blow out day for the non-potable water system.

(Every year)

The scheduled blow out of the non-potable water system is your chance to blow out **your privately-owned irrigation system**, while the District blows out the Districts main lines.

The 3rd Saturday of October (Every year) the District will blow out the non-potable water system. The District has the non-potable water system blow out schedule and map posted on the web site. The District will also e-mail this out through the web site, you must join the web site to get these e-mails.

For the District to blow out the non-potable water system on the 3rd Saturday, we shut off the non-potable water system on the 3rd Thursday, two days before the blow out; This way the District's contractor can hook up air compressors, blow out part of the system, open and close certain valves to accomplish this blow out on such a large system.

1. Before the main line blow out: **Clean your inline filter.**
2. Set your irrigation clock during the scheduled time or do it manually for your color-coded area on the winterization schedule/map. This schedule/map is pasted on the next page and posted on the web site.
3. **DO NOT START YOUR CLOCK BEFORE YOUR START TIME. It affects your neighbors.**
4. Set your irrigation clock to blow out each zone on your system for about 3 to 5 minutes, or until you see no more water coming out of the irrigation heads and switch to the next zone manually.
5. **After you blow out your irrigation system CLOSE your ball valve.** This valve is in your irrigation box.
6. Disclaimer:
 - a. Your home irrigation is privately owned by you and you are responsible for the maintenance and the winterization (blow out) of your own irrigation system.
 - b. You do not have to blow out your irrigation at this time, you can blow out/winterize system whenever you want. However, the district is only offering this blow to your system while we are winterizing our system for the winter.
 - c. If you miss this day, you will have to set up your own irrigation system winterization (blow out).
7. Inline filters and irrigation heads should be cleaned several times a year. Make sure you know where your shut off valve is located and how to turn off your system.

<u>ZONE COLOR</u>	<u>WINTERIZATION TIME-----See colored coded Map.</u>
Pink	8:00 a.m. - 8:40 a.m.
Orange	8:45 a.m. - 9:25 a.m.
Yellow	9:30 a.m. - 10:10 a.m.
Blue	10:15 a.m. -10:55 a.m.
Green	11:00 a.m. -11:40 a.m.
Purple	11:45 a.m. – 12:25 p.m.

12:30 p.m. to 2:30 p.m. entire system will be blown out. In case you missed your scheduled time.

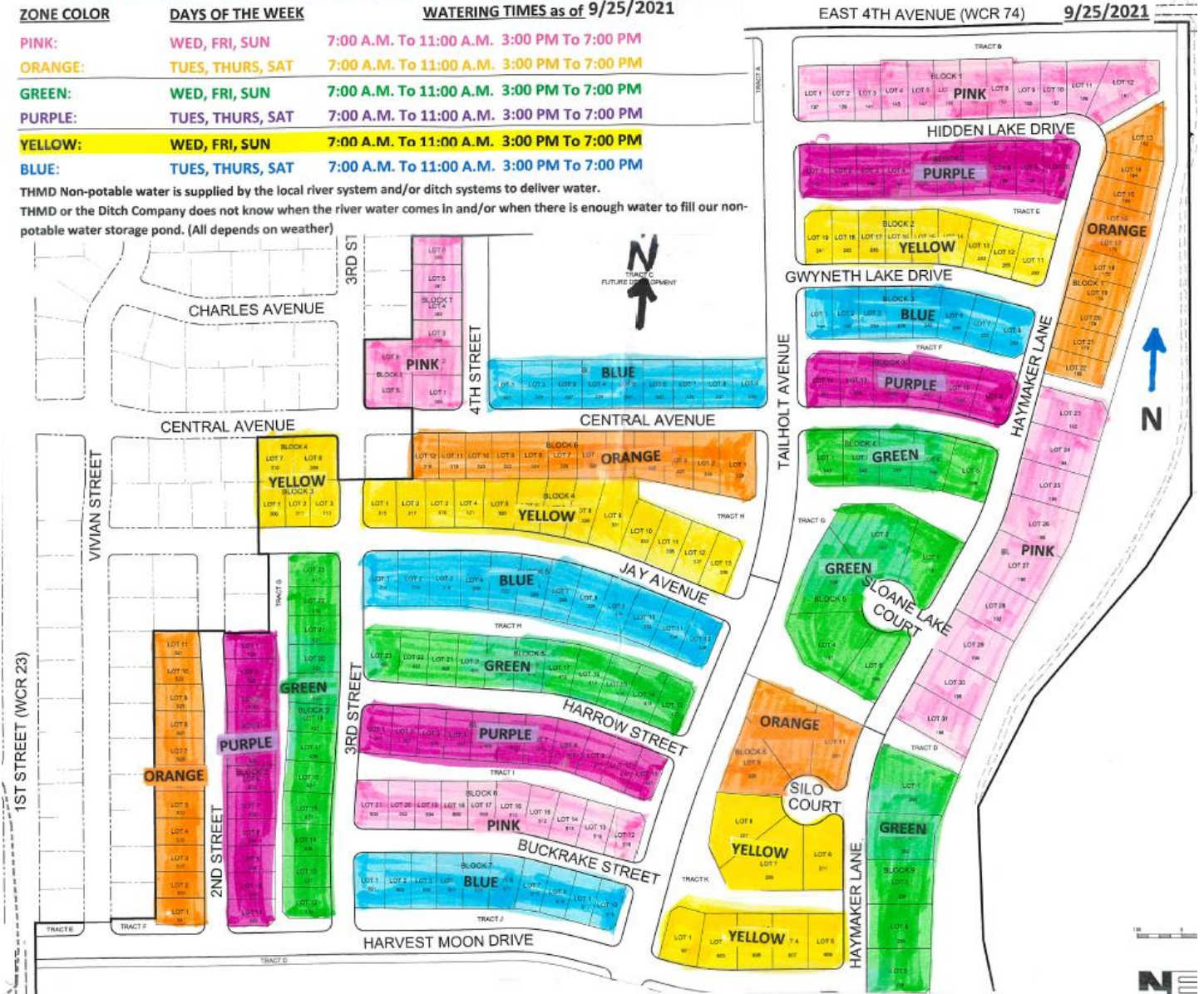
Your home irrigation is privately owned by you.

Non-Potable Water System Winterization Schedule

THMD Non-Potable Home Irrigation Schedule

ZONE COLOR	DAYS OF THE WEEK	WATERING TIMES as of 9/25/2021
PINK:	WED, FRI, SUN	7:00 A.M. To 11:00 A.M. 3:00 PM To 7:00 PM
ORANGE:	TUES, THURS, SAT	7:00 A.M. To 11:00 A.M. 3:00 PM To 7:00 PM
GREEN:	WED, FRI, SUN	7:00 A.M. To 11:00 A.M. 3:00 PM To 7:00 PM
PURPLE:	TUES, THURS, SAT	7:00 A.M. To 11:00 A.M. 3:00 PM To 7:00 PM
YELLOW:	WED, FRI, SUN	7:00 A.M. To 11:00 A.M. 3:00 PM To 7:00 PM
BLUE:	TUES, THURS, SAT	7:00 A.M. To 11:00 A.M. 3:00 PM To 7:00 PM

THMD Non-potable water is supplied by the local river system and/or ditch systems to deliver water.
 THMD or the Ditch Company does not know when the river water comes in and/or when there is enough water to fill our non-potable water storage pond. (All depends on weather)



Non-Potable Water System Winterization Schedule

THMD

Non-Potable Home Winterization

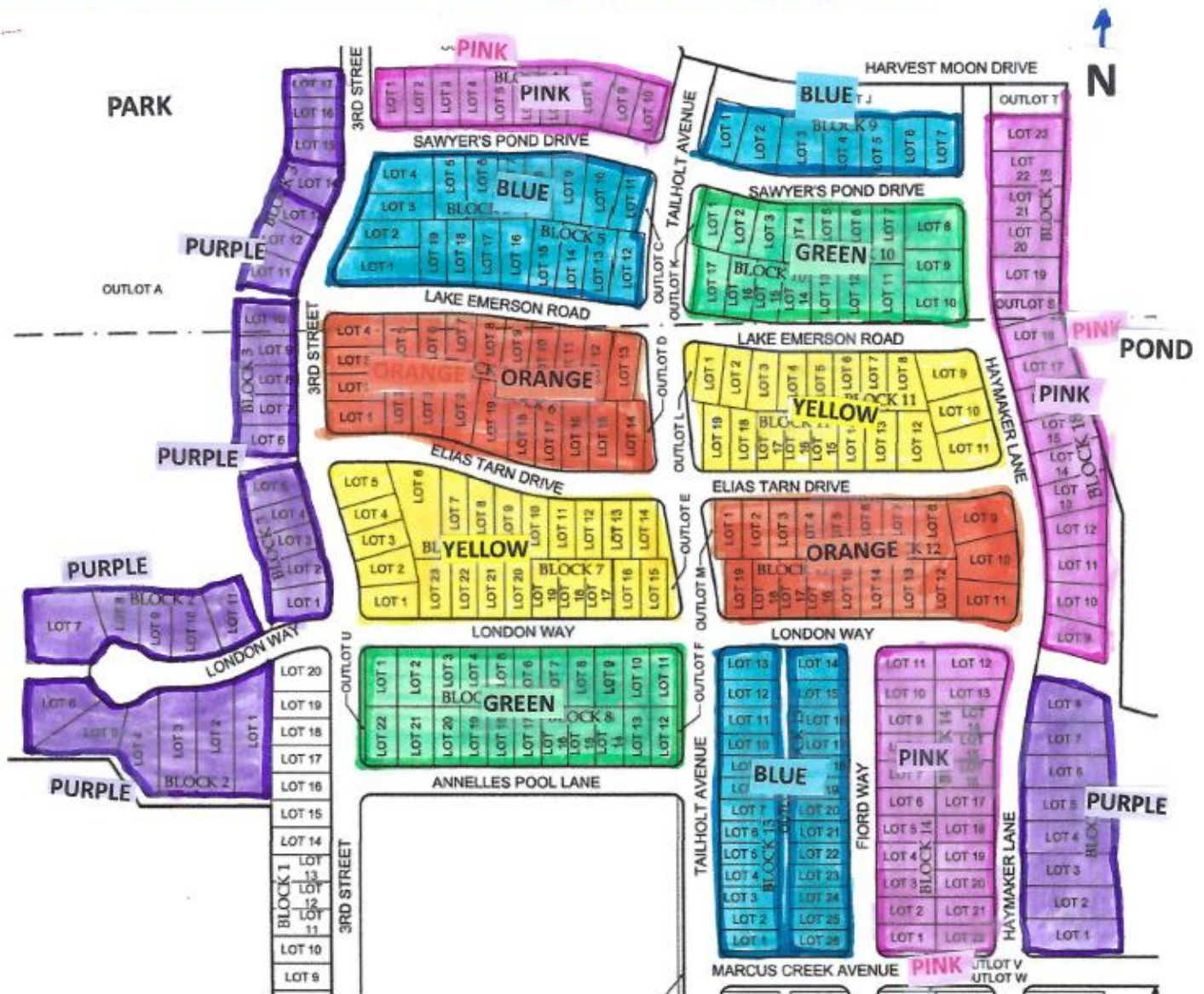
Blow Out Schedule

Filing 4 South of Harvest Moon Drive.

ZONE COLOR	WINTERIZATION TIME
Pink	8:00 a.m. - 8:40 a.m.
Orange	8:45 a.m. - 9:25 a.m.
Yellow	9:30 a.m. - 10:10 a.m.
Blue	10:15 a.m. - 10:55 a.m.
Green	11:00 a.m. - 11:40 a.m.
Purple	11:45 a.m. - 12:25 p.m.
	12:30 p.m. to 2:30 p.m.
	entire system will be blown out.
	In case you missed your scheduled time.

9-25-23

Your home irrigation is privately owned by you. Homeowner is responsible for the maintenance. Homeowner is responsible for your winterization. **Clean in-line filter before blow out starts.** Set your irrigation clock for your schedule time of the blow out. Set each zone for 3 to 4 minutes, to blow out each zone. Or do manually looking for all water to be blown out. Close your main value (Ball Valve) after your blow out. **BLOW OUT DURING YOUR SCHEDULE TIME!**



THMD

210 Haymaker Lane

Severance, Colorado 80550

Phone: 970-488-2823

9-29-21